



MONTHLY MEMBERSHIP PROGRESS REPORT

District 2 T2

Results as of: 3/31/2017

GMT: HAL GRIFFIN

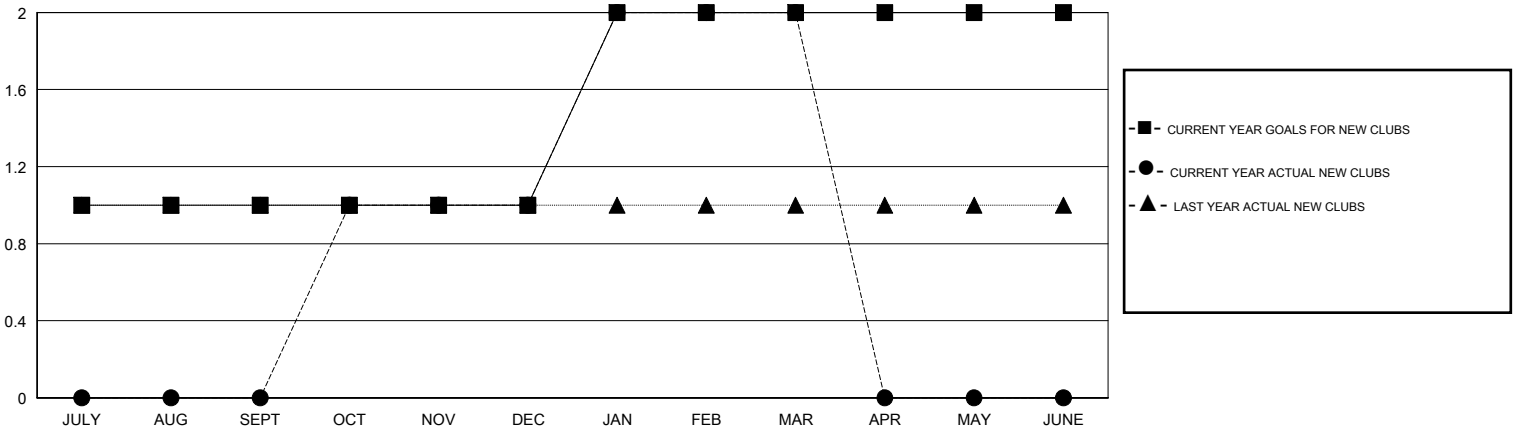
LOCATION TEXAS

GMT CA

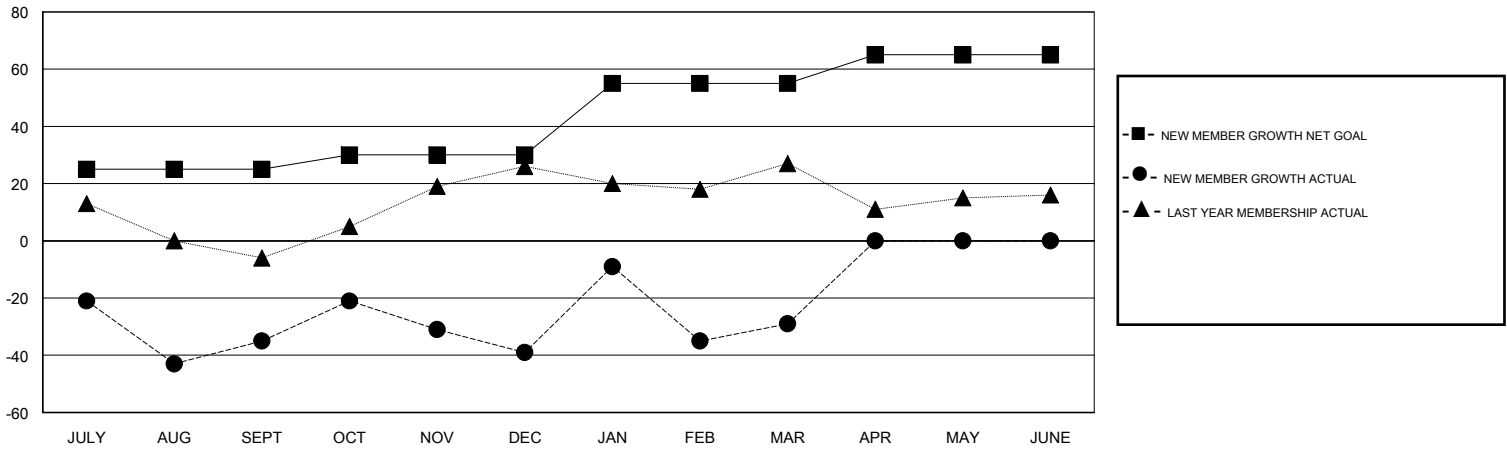
Clubs			
RESULTS FOR 2016-2017			
QUARTER	NEW CLUB GOAL	NEW CLUBS	DROPPED CLUBS
JULY/AUG/SEPT	1	0	0
OCT/NOV/DEC	0	1	1
JAN/FEB/MAR	1	1	1
APR/MAY/JUNE	0	0	0

Members			
RESULTS FOR 2016-2017			
QUARTER	NEW MEMBER GROWTH NET GOAL (not reinstated or transfers)	NEW MEMBER GROWTH ACTUAL (not reinstated or transfers)	DROPPED MEMBERS ACTUAL (including transfers)
JULY/AUG/SEPT	25	33	68
OCT/NOV/DEC	5	47	51
JAN/FEB/MAR	25	71	61
APR/MAY/JUNE	10	0	0

GOALS AND ACTUAL NEW CLUBS CUMULATIVE



GOALS AND ACTUAL MEMBERS CUMULATIVE



DROPPED CLUBS: 2	22 CLUBS OF 44 ADDED 1 OR MORE NEW MEMBERS	GENDER DISTRIBUTION
		MALE 986 (75.10%)
		FEMALE 327 (24.90%)
DROPPED MEMBERS	CLICK HERE FOR CUMULATIVE MEMBERSHIP DATA	TOTAL FAMILY UNIT MEMBERS 122
DECEASED 9		FAMILY MEMBERS PAYING HALF DUES 62
CLUB CANCELLED 13		
OTHER 158		
TOTAL 180		